

Why Should I Get Involved?

If you use transportation, you are involved!

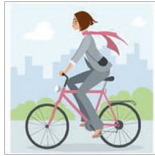


You probably used some form of transportation today. Whether it's a car, bike, bus, wheelchair or walking – you are involved.

Transportation allows us to get to and from work, school, shopping, meetings, events, medical services, etc. Transportation affects our quality of life, from the air we breathe, safety of our families, and to our own personal budgets.



The transportation system is designed to serve you. The funding to develop and maintain our transportation system comes from several sources – including your tax dollars!



Your input is critical to the overall quality of our region's transportation system, and to ensure your transportation needs are being met.



- What type of transportation do you use?
- Are you satisfied with your choices?
- Do you have any problems with this method?
- Would you like more options?

Interested in Getting Involved?

→ **Inquire about serving on the Public Advisory Council (PAC)**, which is the public sounding board to the MPO Policy Committee. Email Sue Casavan at scasavan@rvcog.org or call 541-423-1360.

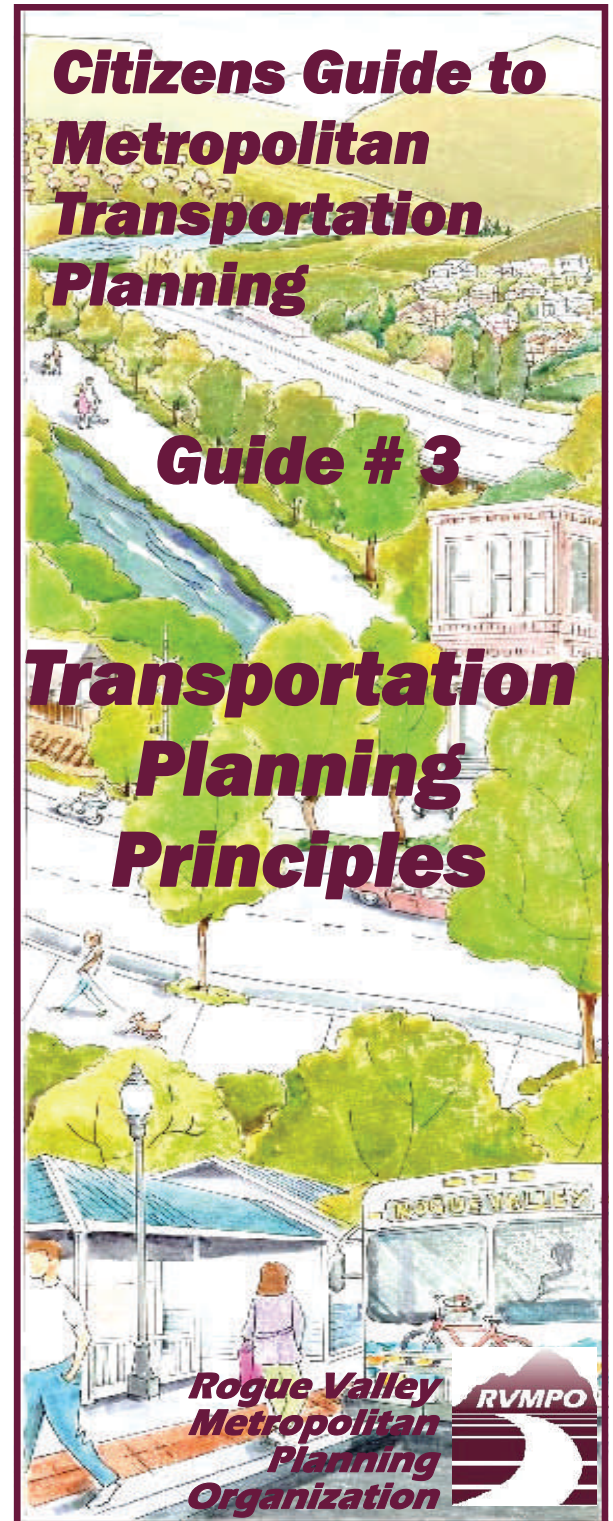
→ **Visit the RVMPO website:** www.rvmopo.org. From the website you can read/download our documents, learn about future events, read our meeting minutes, check our meeting agendas and meet the staff.

→ **Join the RVMPO email list:** To receive notices when public meetings and comment periods are held: Email Sue Casavan at scasavan@rvcog.org or call 541-423-1360.



Rogue Valley Metropolitan Planning Organization

Staffed by the Rogue Valley Council of Governments, 155 N. First St.,
P.O. Box 3275, Central Point, OR 97502
541.664-6674 www.rvmopo.org



Transportation Planning Principles

The planning process is more than merely a listing of future highways and planned transit upgrades; it requires developing strategies for operating, managing, maintaining and financing the area's transportation system in order to advance the region's long-term goals.

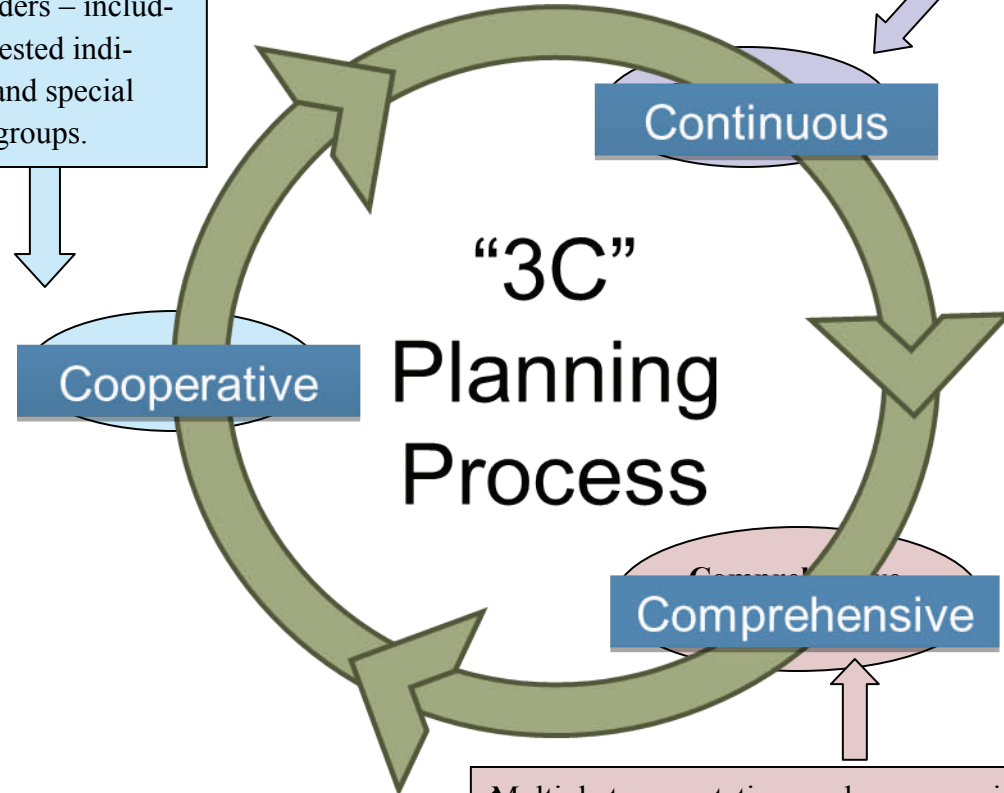
3-C Process: MPOs were created in order to ensure that existing and future expenditures for transportation projects and programs are guided by the 3-C process, which means the transportation planning process is **continuous**, **cooperative**, and **comprehensive**.

RVMPO partners:

- Federal Highway Administration (FHWA)
- Federal Transit Administration (FTA)
- Oregon Department of Transportation (ODOT)
- Rogue Valley Transportation District (RVTD)
- Jackson County and the Cities of Ashland, Talent, Phoenix, Jacksonville, Medford, Central Point, Eagle Point and White City

The RVMPO works with local and state stakeholders – including interested individuals and special interest groups.

Key documents are continuously reviewed and updated when necessary.



Multiple transportation modes are considered:

- personal vehicle, transit, biking, walking, freight, air

As well as multiple factors including:

- air quality, social justice and employment.

This guide is provided to help you become better informed and encourage your participation in the transportation planning activities of the Rogue Valley Metropolitan Planning Organization (RVMPO)