

## Why Should I Get Involved?

If you use transportation, you are involved!



You probably used some form of transportation today. Whether it's a car, bike, bus, wheelchair or walking – you are involved.

Transportation allows us to get to and from work, school, shopping, meetings, events, medical services, etc.



Transportation affects our quality of life, from the air we breathe, safety of our families, and to our own personal budgets.

The transportation system is designed to serve you. The funding to develop and maintain our transportation system comes from several sources – including your tax dollars!

Your input is critical to the overall quality of our region's transportation system, and to ensure your transportation needs are being met.



- What type of transportation do you use?
- Are you satisfied with your choices?
- Do you have any problems with this method?
- Would you like more options?

## Interested in Getting Involved?

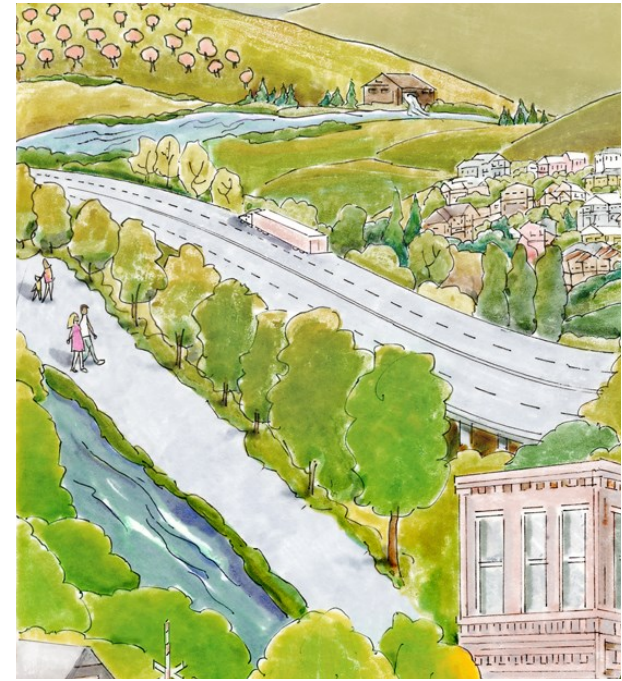
- **Consider serving on the Public Advisory Council (PAC)**, which is the public sounding board to the MPO Policy Committee. Email [rvmpo@rvcog.org](mailto:rvmpo@rvcog.org) or call us at 541-664-6674.
- **Visit the RVMPO website, [www.rvmpo.org](http://www.rvmpo.org).** There you can read and download our documents, learn about future events, read meeting minutes, review meeting agendas, and meet the staff.
- **Join the RVMPO email list** to receive notices when public meetings and comment periods are held. Email [rvmpo@rvcog.org](mailto:rvmpo@rvcog.org) or call us at 541-664-6674.
- **Why are there MPOs?**  
<https://www.youtube.com/watch?v=jA8PH7-Gi00>



**Rogue Valley Metropolitan Planning Organization is staffed by:**



**Rogue Valley Council of Governments**  
155 N. First St.  
P.O. Box 3275,  
Central Point, OR 97502  
541-664-6674 [www.rvmpo.org](http://www.rvmpo.org)



## Citizens Guide to Metropolitan Transportation Planning

### Guide 1 **What Is the RVMPO?**



**Rogue Valley Metropolitan Planning Organization**

## What is the RVMPO?

A metropolitan planning organization (MPO) is an entity designated by law for areas with a population of 50,000 or more. They coordinate the development of the area's transportation plans and for coordinating the transportation planning process. Federal funding for transportation projects and programs are channeled through the MPO. **The Rogue Valley Metropolitan Planning Organization (RVMPO)** covers the urbanized area of Jackson County, which includes the communities of Ashland, Talent, Phoenix, Jacksonville, Medford, Central Point, White City, and Eagle Point.

### Federal and state legal responsibilities for MPOs can be summarized as:

- Develop and maintain a long-range **Regional Transportation Plan (RTP)**.
- Develop and maintain a short-range project programming document, the **Transportation Improvement Program (TIP)**.
- Coordinate transportation decisions among local jurisdictions, state agencies, and area transit operators. Develop an **annual work program (UPWP)**.
- House and staff the regional **travel demand model** for the purposes of assessing, planning, and coordinating regional travel demand impacts.

Additionally, due to local circumstances, RVMPO has responsibility under the Clean Air Act (and corresponding state law) for performing regional **air quality conformity** analyses and demonstrate regional transportation conformity for carbon monoxide (CO) and particulate matter (PM<sub>10</sub>).

## Committees

### • Policy Committee

The RVMPO Policy Committee makes final RVMPO planning decisions. It is composed of elected and appointed officials from Central Point, Medford, Phoenix, Ashland, Talent, Jacksonville, Eagle Point, Rogue Valley Transportation District (RVTD), Jackson County and ODOT. The Policy Committee considers public comment and recommendations from the **two standing advisory committees**.

### • Technical Advisory Committee (TAC)

The RVMPO TAC is primarily made up of technical staff from the public works and planning departments of member jurisdictions, local agencies and state planning officials. Because of their technical expertise, TAC members are mostly involved with the transportation planning process. TAC advises the Policy Committee on technical transportation issues and reviews all of the transportation documents presented to the Policy Committee.

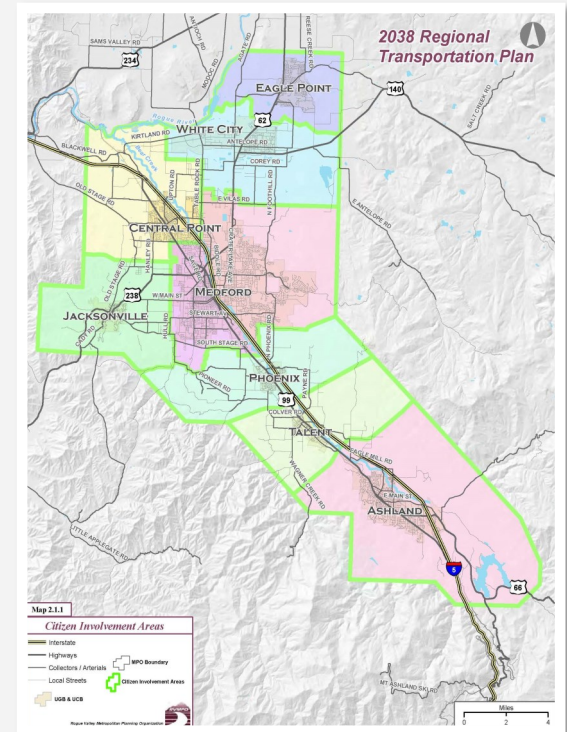
### • Public Advisory Council (PAC)

The RVMPO PAC consists of residents from geographic and special-interest

areas within the RVMPO, appointed by the Policy Committee. Members make recommendations from the public's perspective on proposed long-range transportation plans, project plans, priorities for state and federal funding and other transportation issues.

The standing advisory committees also receive public comment. In addition to these two committees, the Policy Committee from time to time authorizes the formation of ad hoc committees to provide input on specific planning issues and projects.

## PAC Membership Areas



This guide is to help keep you informed and encourage your participation in the transportation planning activities of the Rogue Valley Metropolitan Planning Organization.