



Federal Nexus = NEPA

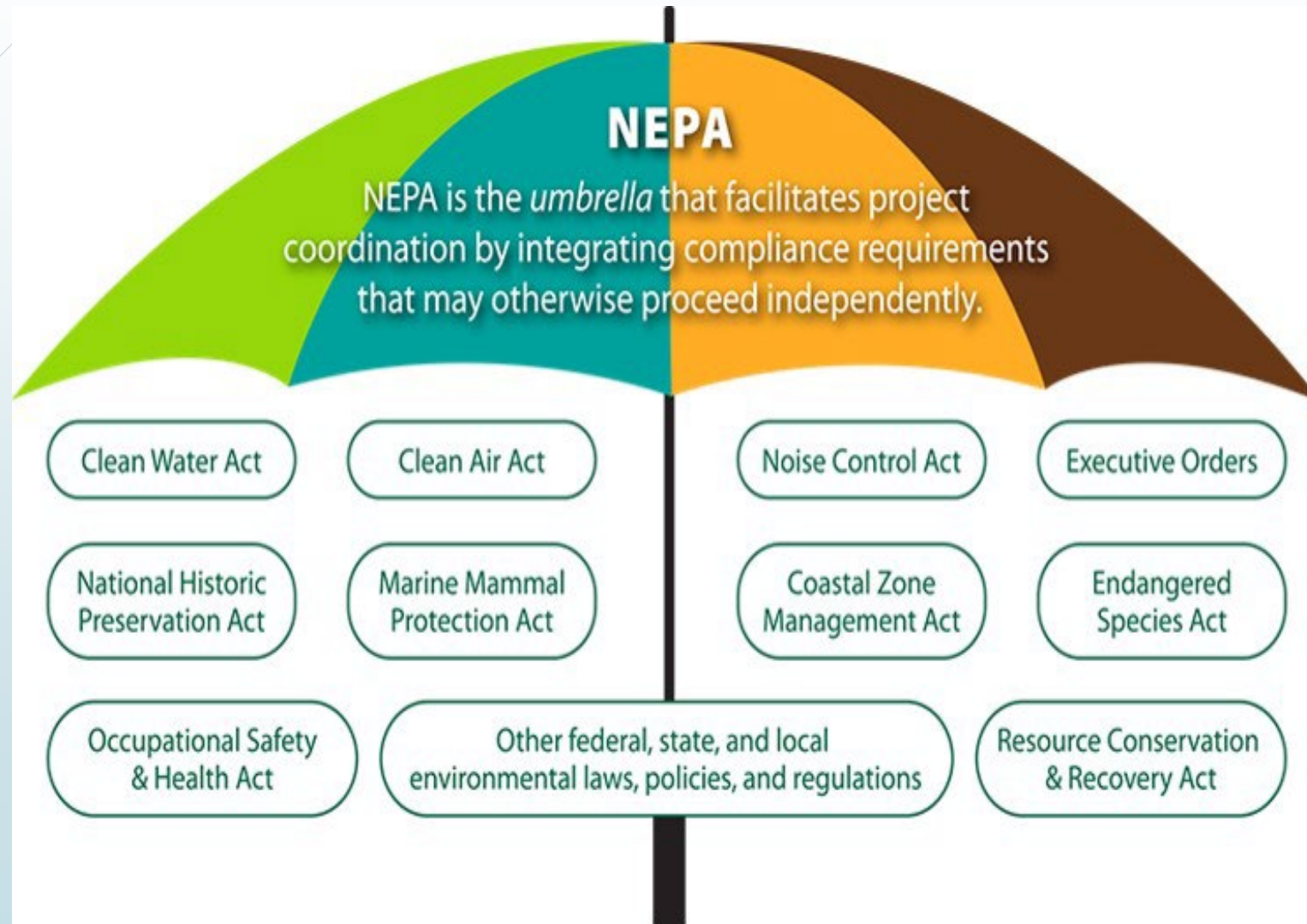
- 1.Funded by
 - 2.Assisted by
 - 3.Regulated by
 - 4.Conducted by
 - 5.Approved by
 - 6.Permitted by
- ... a Federal Agency



NEPA's Objectives

- Disclose, analyze, and consider environmental information as a criteria when making decisions about federal actions.
- Inform the public of potential impacts and alternatives and involve the public in decision making.

NEPA – Procedural (Umbrella) Law





NEPA – REC Document Requirements

► Project Prospectus Part 3

- The Project Prospectus Part 3 Project Environmental Classification (aka Part 3) and expanded checklist continue to be an essential project scoping tool for early identification of potential environmental concerns, NEPA classification, and programming environmental tasks.

► PCE Determination Form

- The PCE Determination Form is applicable to projects that are not expected to exceed the impact thresholds of the 2015 PCE Agreement. The PCE Determination Form is prepared after sufficient scoping has been conducted to complete the Project Prospectus Part 3.

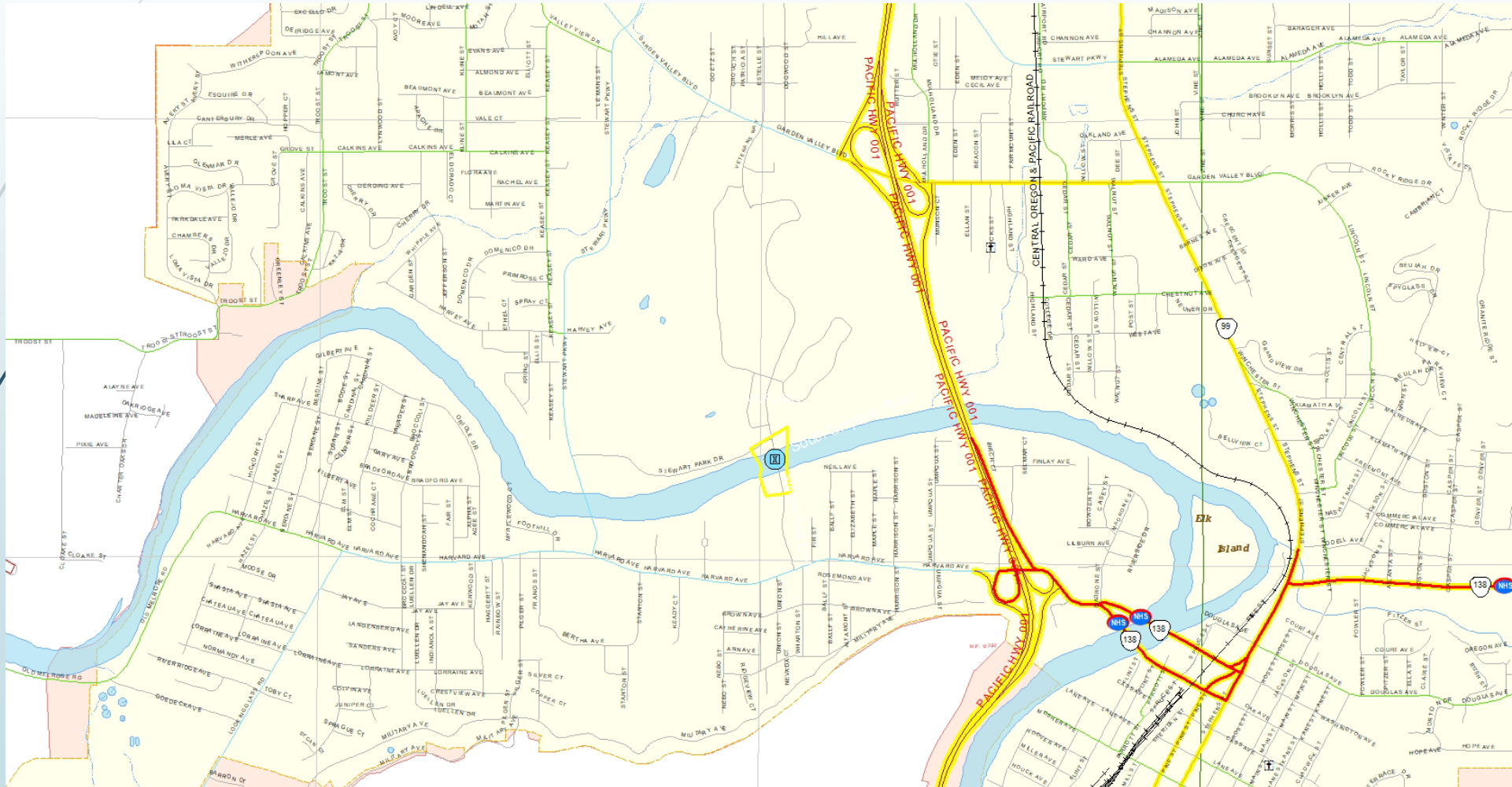
► PCE Approval Document

- The PCE Approval Document including signatures of qualified ODOT preparers and approvers, and any required attachments, constitutes final NEPA approval for projects that do not exceed the impact thresholds of the 2015 PCE Agreement.

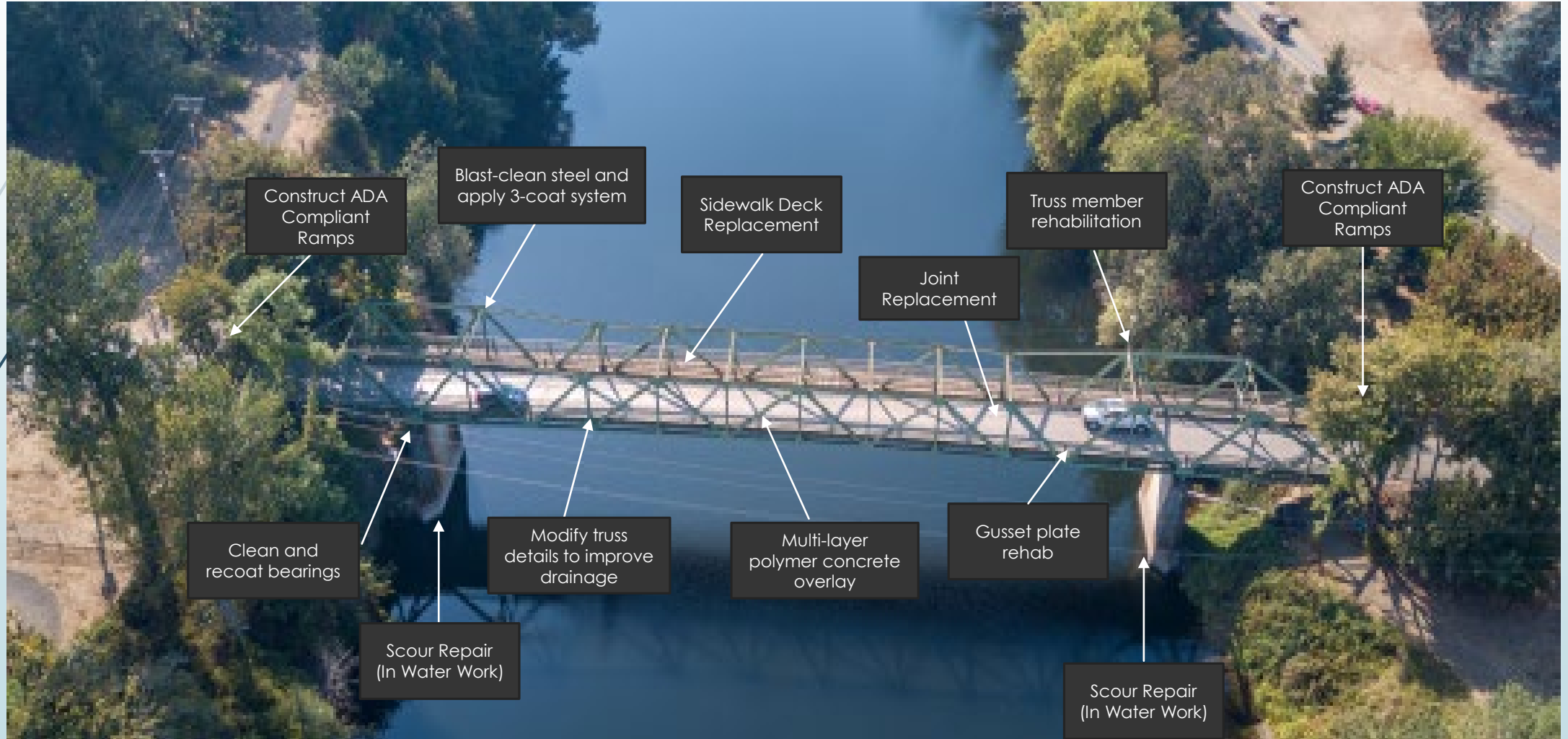
► CE Closeout Document

- The CE Closeout Document is applicable to CE projects that exceed the impact thresholds of the 2015 PCE Agreement. The CE Closeout Document, including signatures of qualified ODOT preparers and approvers, and any required supporting documents, must be submitted to FHWA Oregon Division for review and final approval. (Note: this must be completed prior to FHWA release of ROW funding)

Stewart Park Drive: South Umpqua River Bridge (Roseburg)



Stewart Park Drive: South Umpqua River Bridge (Roseburg)



Stewart Park Drive: South Umpqua River Bridge (Roseburg)

Historic Bridge considered eligible/significant. Adverse Effect? Section 4(f)?

Coast Guard jurisdiction: concurrence only.

Archaeology: Known artifacts. Probing likely required. SHPO permit? Avoidance or recovery?

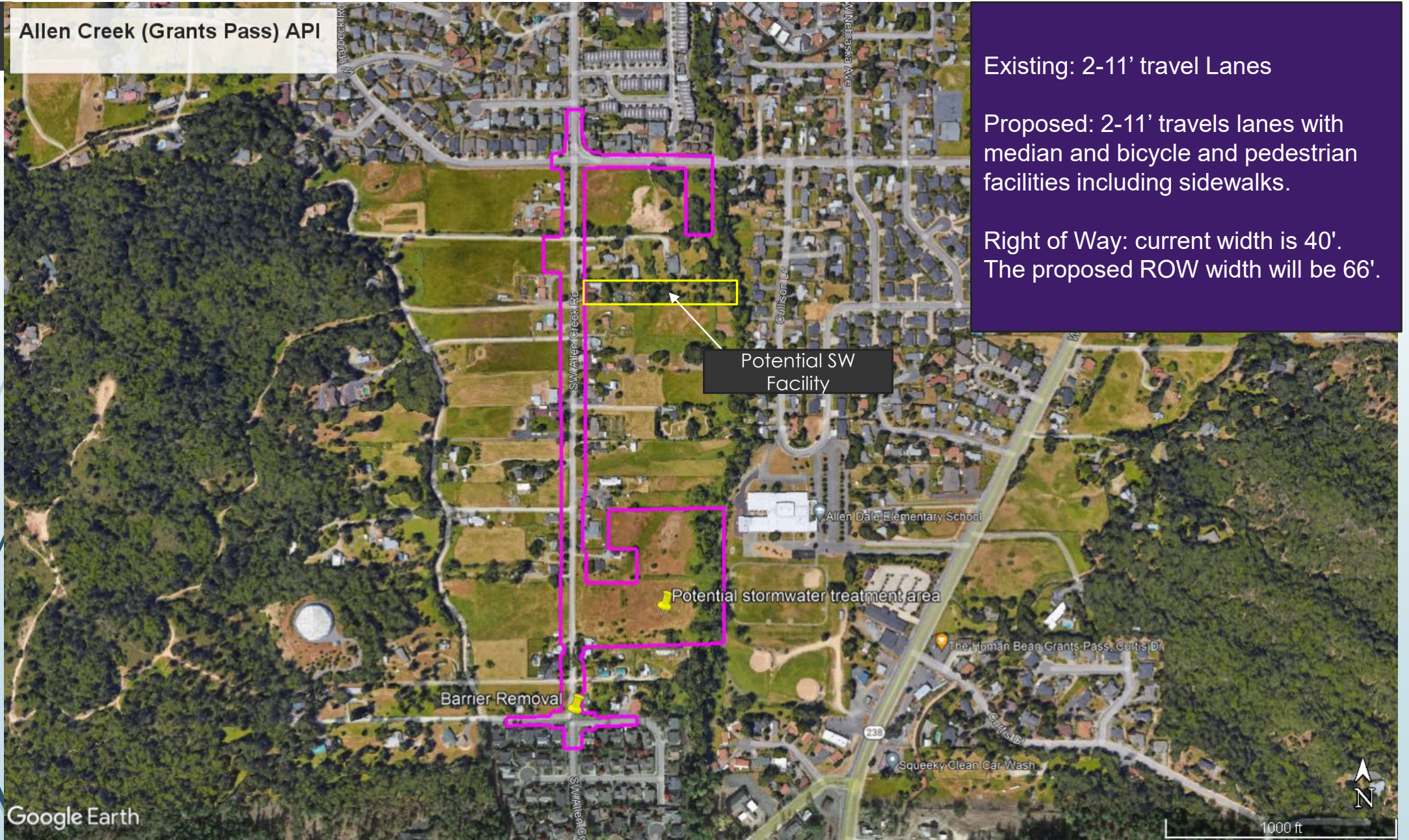


The simple stuff:
ESA: FAHP (SWMP)
Corps NW Permit
DSL Gen Permit
Hazmat Testing/Reporting

Potential Road Closure/Detour
Potential Impacts to School and VA hospital

Parks and bike-paths: Section 4(f)? Use, de minimis, temp occupancy? Section 6(f) in play

Allen Creek Road Improvements





Allen Creek Road Improvements

■ KEY ISSUES

- Public Coordination –
 - Angry Landowners
 - A Public Involvement and Communication Plan is being developed.
- Right of Way Acquisition -
 - An estimated 3 properties will include displacements. Frontage takes will occur from Harbeck to Denton Trail Road.
 - Socioeconomic issues?
- Air Quality – Qualitative analysis required for the signal location at New Hope.
- Noise – Potential Noise study needed. Mitigation?
- Parks – Section 4(f)?
- NRCS – Farmland Conversion Impact Rating. (based on impacts to Prime, Unique, Statewide or Local Important Farmland)



Allen Creek Road Improvements

- Other permits and clearances.
 - Wetland Delineation
 - Corps/DSL Permits, possible wetland mitigation plan
 - FAHP Programmatic BO - coho salmon
 - Stormwater Management Plan
 - Archaeological Baseline Report
 - Potential Archaeological Probing – potential permit from SHPO
 - Section 106 documentation - Archaeology
 - Historic Resources Baseline Report
 - Section 106 documentation – Historic
 - Potential DOE/FOE
 - Level I Hazmat Evaluation
 - 1200-C Permit
 - Erosion and Sediment Control Plan



Allen Creek Road Improvements

- Schedule –
 - DAP Complete – 9/27/2022
 - Submit PSE – 7/14/2023
- Preliminary NEPA Class of Action – CE
 - Require relocation of significant numbers of people?
 - Involve significant air, noise, or water quality impacts?
 - Have significant impacts on travel patterns?